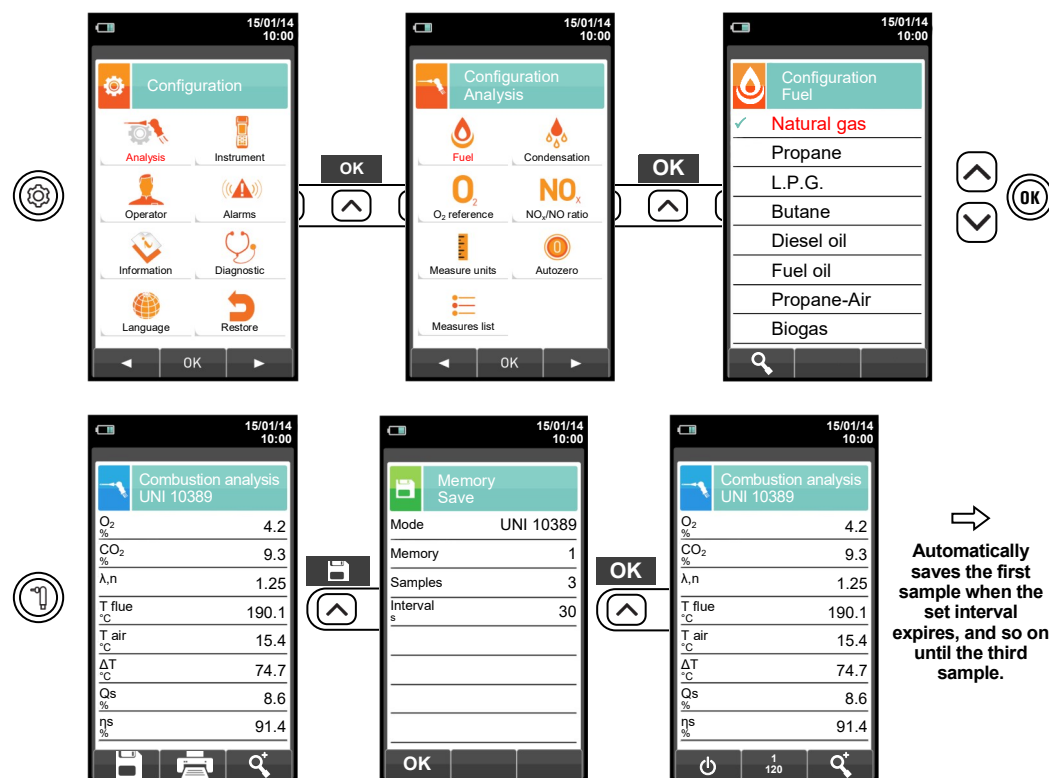
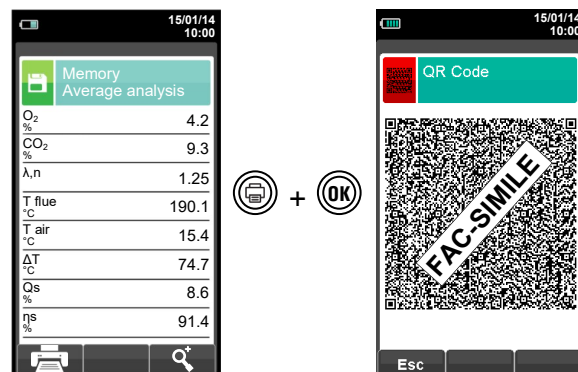


6 FLUE GAS ANALYSIS UNI 10389 MODE

WARNING! Before proceeding with the combustion analysis remember to set the proper fuel.



In case the automatic print mode is set then the average analysis printing start automatically. Conversely, after the sampling of the third analysis, the average analysis is shown, so that it can be sent to the printer or downloaded as explained in the following.



Scan the QR code using the Seitron APP "SMARTFLUE LITE MOBILE", to download the acquired data related to the average analyses and the additional measures, if performed.

CHEMIST 600 BE GREEN QUICK GUIDE



Compliant with: EN 50379-1, EN 50379-2, UNI 10389-1

Features

- Flue gas analysis
- Calculating of stack heat loss and efficiency
- CO environment measurement
- Gas pipes tightness test according to standards UNI 7129 and UNI 11137
- Store Smoke value, calculating mean value
- Measuring differential pressure
- Draught measurement
- Pressure measurement in the gas supply pipe.



The magnets in the back of the instrument can damage credit cards, hard driver, mechanical watches, pacemakers, defibrillators and other devices proven sensitive to magnetic fields. It is recommended to keep the instrument at a distance of at least 25cm away from these devices.

KEYBOARD FUNCTIONS

KEYS	FUNCTION
[Up] [Up] [Up]	Activate the context keys shown on the display
[Memory]	Enters the Memory menu
[Print]	Enters the Print menu
[Settings]	Enters the Configuration menu
[Flue Gas]	Starts the flue gas analysis
[Measurements]	Enters the measurements menu
[Power]	Turns the instrument on/off
[ESC]	Quits the current screen
[Left] [Up] [Right] [Down]	Selects and/or modifies
[OK]	Confirms data

CONTEXT KEYS

CONTEXT KEY	FUNCTION
[Zero]	Makes the pressure zero
[Refresh]	Updates the measure
[Camera]	Saves the current measurement or analysis in the memory location selected from the 'Select Memory' menu
[Printer]	Starts the report ticket
[Print]	Enters the Print menu
[Stop]	Stops the flue gas analysis
[Edit]	Enters the modify mode for the selected parameter
[OK]	Confirms the settings
[Esc]	Cancels the change/operation and returns to the previous screen
[Zoom In]	Zooms the screen
[Zoom Out]	Shows the details for the selected parameter
[Find]	'Find' function; starts a quick search for the analysis to recall



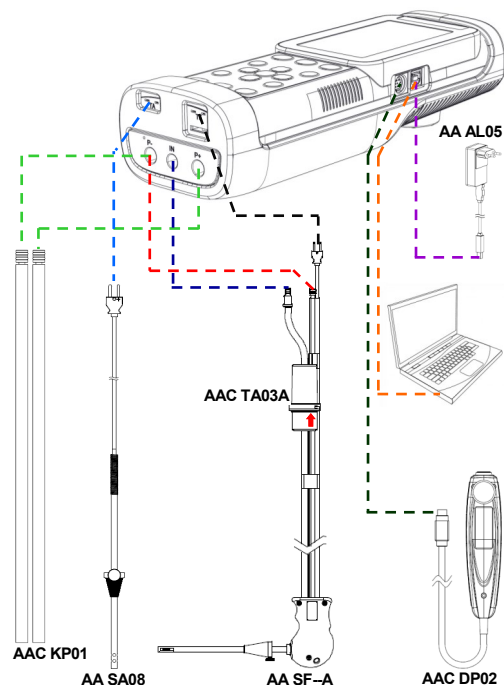
Seitron respects the nature and the environment, therefore provides this quick user guide to avoid any unwanted waste of paper. However the complete manual for use and maintenance of the instrument is already available in the USB stick (included), or can be downloaded from the website www.seitron.com.
Respect your environment: think before printing the full manual on paper.



seitron
Innovation Technology

Via del Commercio, 9/11 36065 - MUSSOLENTE (VI)
+39.(0)424.567842 - +39.(0)424.567849
info@seitron.it - www.seitron.com

1 USING THE FLUE GAS ANALYSER

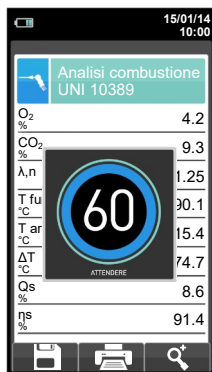


2 ON / OFF

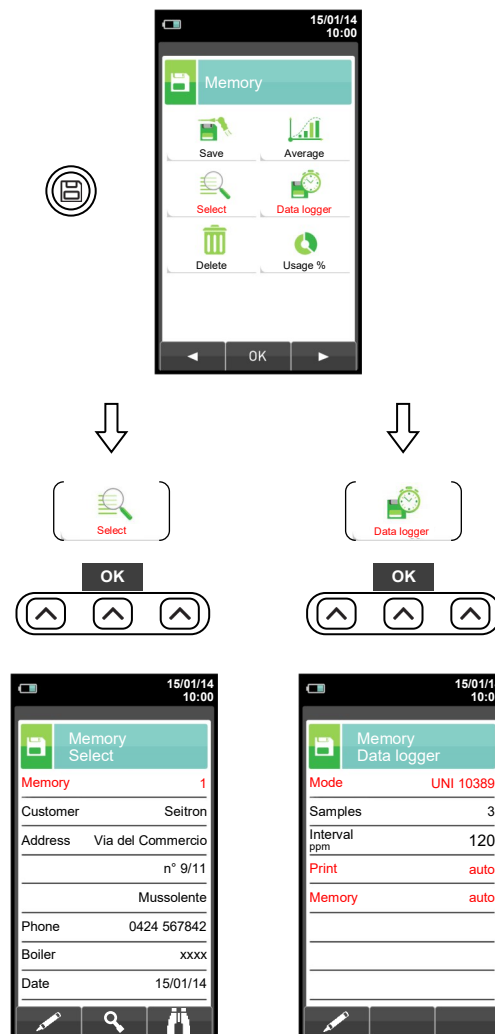
WARNING!
During autozero **DO NOT** insert the gas probe in the chimney.



KEEP
PRESSED
FOR 2
SECONDS
UNTIL IT
BEEPS



3 MEMORY

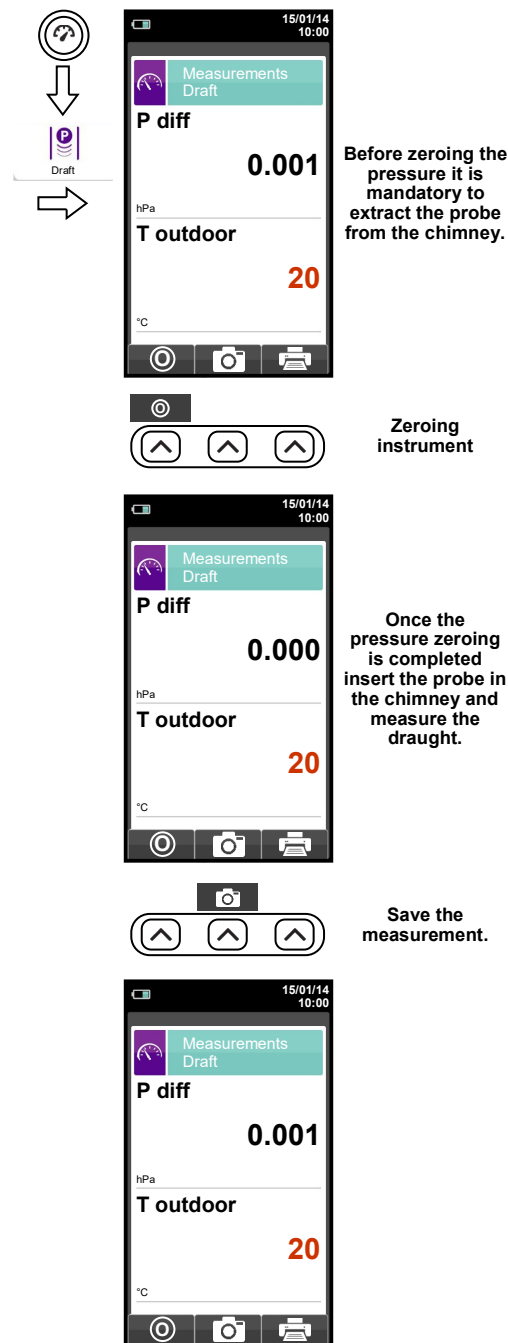


In "Select" can be inserted all the customer data.

In "Data logger" the user can define the analysis, memory selection and printing modes.

Suggested settings:
Mode: UNI 10389
Print: auto
Memory: auto (assigns a new memory at each instrument turn-on).

4 MEASURE OF THE DRAUGHT



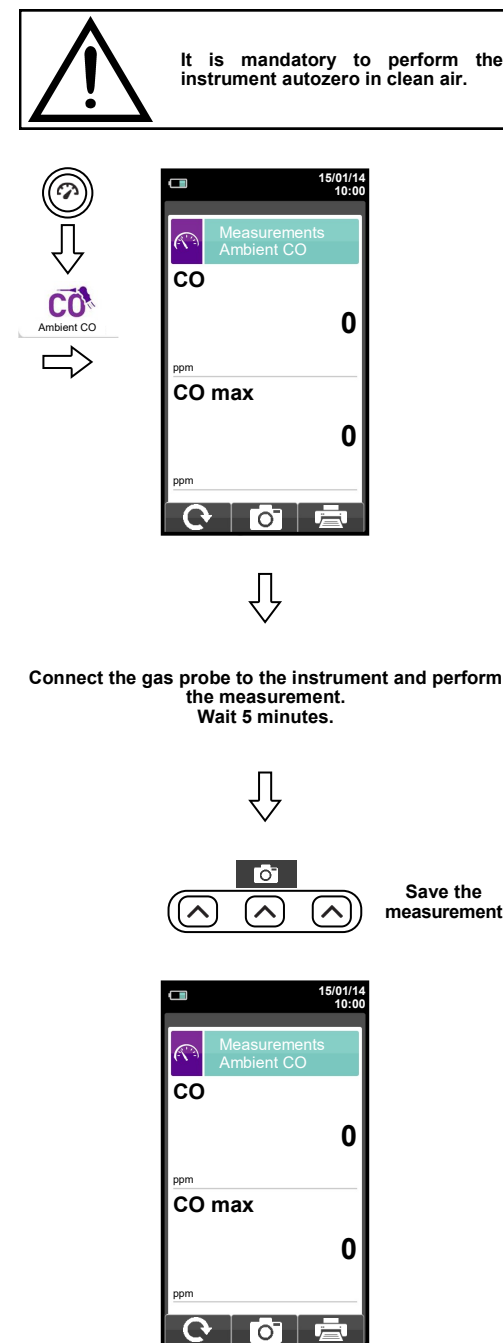
Before zeroing the pressure it is mandatory to extract the probe from the chimney.

Zeroing instrument

Once the pressure zeroing is completed insert the probe in the chimney and measure the draught.

Save the measurement.

5 MEASURE AMBIENT CO



Connect the gas probe to the instrument and perform the measurement.
Wait 5 minutes.

Save the measurement